

PHOENIX

Phase Converters

GP75NLA

**Single Phase 230 Volts to Three
Phase 230 Volts**



DATASHEET

GP75

Power Supply		Three Phase Electrical Specs		Loads Examples	
INPUT VOLTAGE	208-250V	VOLTAGE OUTPUT	208-250V	CNC Machine Spindle HP MAX	37.5 HP
UTILITY SERVICE MIN.	75 KVA / 300 AMPS	MAX INDUCTIVE AMPS	182	Compressor Motor HP MAX	30 HP
MOTOR LOAD TYPE BREAKER	125 to 350 AMP	MAX RESISTIVE AMPS	105	Total Combined HP of motors	75 HP
SINGLE PHASE WIRE SIZE	4/0 COPPER to 50 feet	IDLER MOTOR WIRE SIZE	1/0 AWG COPPER	Manual Lathe	37.5 HP
Dimensions and Weight Electrical Panel		Dimensions and Weight Idler / Generator Motor		IDLER MOTOR	PANEL ENCLOSURE
Weight 98 LBS	Dimensions 26 x 26 x 10	Weight 873.1 LBS	Dimensions 27 x17 x 17	TEFC Cast Iron	Nema 4 Indoor / Outdoor

Standard Features

- Auto-restart from blackouts or power loss
- Voltage Monitor Display
- TEFC (Totally Enclosed Fan Cooled) Generator
- Heavy-duty cast iron generator frame
- NEMA 4 enclosure, heavy hinged door, with Lock-Out locks and keys.
- Powder coated for rust protection.
- Precision Balanced Voltage
- AutoLink built in Load Starter and Protection or add another converter

Optional Features

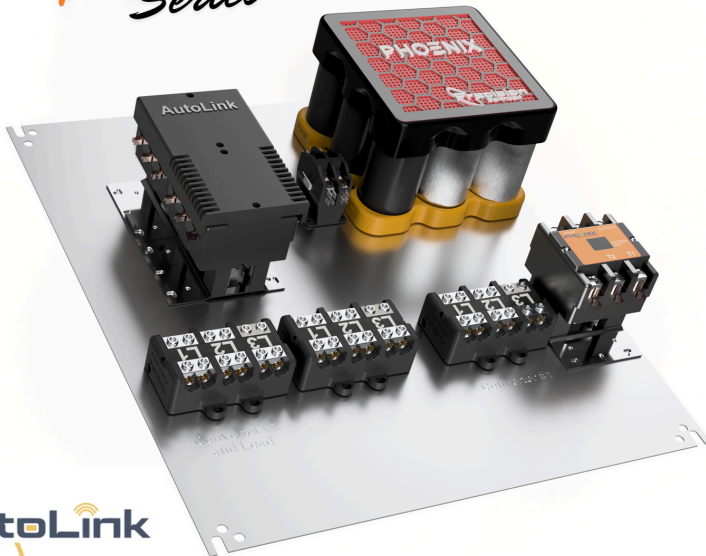
- 208 or 460 Volts Output (includes transformer)
- PL Model Start and Stop Button with Built-in Mag starter
- AutoStart and Stop with Load Detection
- Digital GPX (wifi, cloud controls, timer, energy monitor)
- Wireless Remote ON/OFF
- EX Model, Include pre-install expansion to increase the size of your phase converter

240 Single Phase Input

480 Three Phase Output

GP75NLA

PRO Series



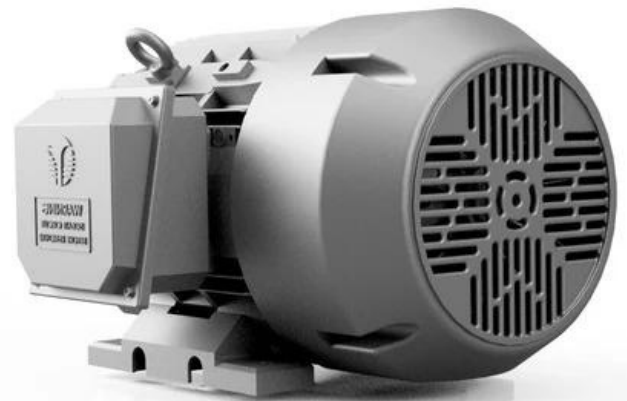
- Power Loss Protection
- Pairing One or More Phase Converters Together
- Self Starting your Equipment or Connecting a Transformer
- Prewired Phase Converter to AutoLink
- Soft Starting for Rural Areas



Cast Iron Frame

Standard Feature TEFC (Totally Enclosed Fan Cooled) Generator and Cast Iron Frame.

Our Highly Reliable Motors: At Phoenix Phase Converters we use the best components that last a lifetime. The 75 HP rotary phase converter - GP75NLA [single phase to three phase converter](#) features a totally enclosed fan cooled and cast iron frame motor. It is sealed from any outside environment and is made to be used in a metal shop, woodshop, and outdoors. The phase converter is designed to be utilized in cold or hot weather. Watch the video below to learn more.



Optional

3-Phase 480V Delta - 240V Delta / 120

- Self-cooled (AA)
- Aluminum windings
- Voltage adjustment taps
- Impedance 5.75 % ($\pm 7.5\%$)
- NEMA 3R indoor/outdoor enclosure
- High-grade silicon-steel core
- 150 degree C rise
- VPI windings
- Stub-up/down bus
- Stainless steel hardware

45 KVA

240 Volts @ 108.4 AMPS

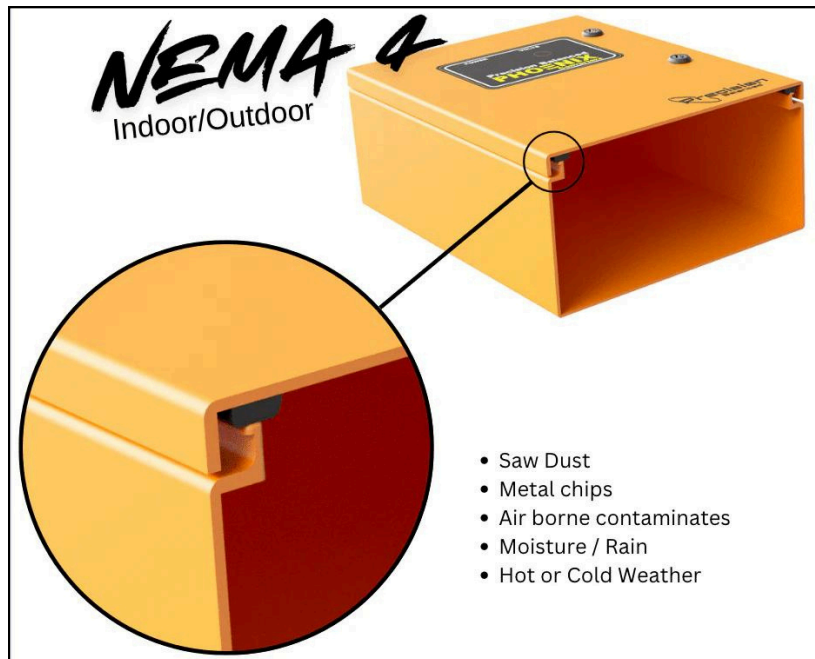
480 Volts @ 54.2 AMPS



37 Inch Width X 27 Inch Depth X 17 Inch Height Size; 60 Hertz Frequency Rating; 3 Phase(S); UL (Canada and Us), UL 506, CSA C22.2 Approval 385 lbs.

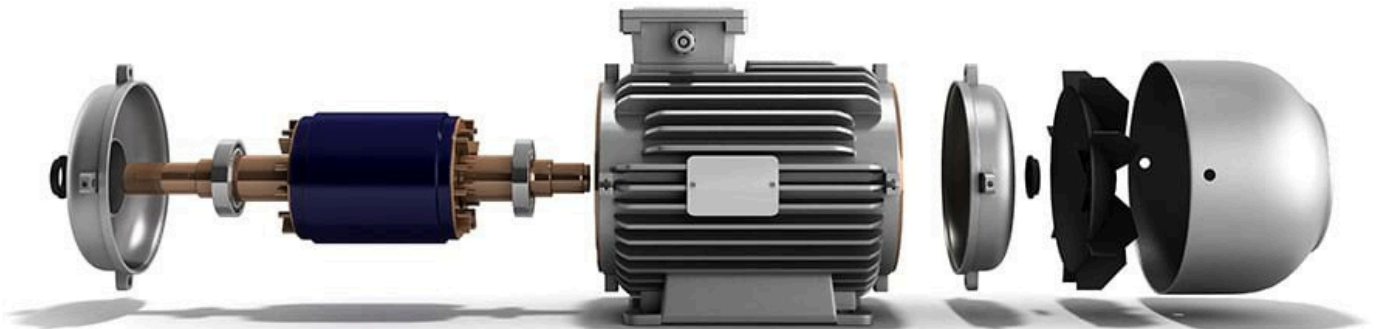
Control Panel

At Phoenix Phase Converters we use the best components that last a lifetime. The GP75NLA - 75 HP rotary phase converter is sealed from any outside environment and is made to be used in a metal shop, woodshop, and outdoors. In addition, the phase converter is designed to be utilized in cold or hot weather. An intuitive standard voltage meter display to monitor your generated phase. The rotary phase converter is engineered with a NEMA 4 enclosure to ensure it is durable in a variety of commercial environments. The AutoLink protect your equipment



Generator/Idler

Standard Feature TEFC (Totally Enclosed Fan Cooled) Generator and Cast Iron Frame.
Our Highly Reliable Motors: At Phoenix Phase Converters we use the best components that last a lifetime. The 75 HP rotary phase converter - GP75NLA single phase to three phase converter features a totally enclosed fan cooled and cast iron frame motor. It is sealed from any outside environment and is made to be used in a metal shop, woodshop, and outdoors. The phase converter is designed to be utilized in cold or hot weather. Watch the video below to learn more.



More on what make TEFC different then ODP